

[View this email in your browser](#)



**PIONEER
WATERPROOFING
COMPANY
INC.**

Preserving Our Past – Protecting Our Future

Preservations

Fall 2025

We are continuing to send out our quarterly digital newsletter and thank everyone for your positive feedback. Our crews are keeping busy throughout the Pacific Northwest maintaining and restoring treasured historic landmarks and our region's institutional, commercial, and civic buildings. We look forward to hearing about your upcoming projects and how Pioneer's services could strengthen your team.

Elk-traordinary Renewal in the Heart of Portland

**City of Portland's Thompson Elk Fountain
Portland, OR**

GC: Cedar Mill Construction

Pioneer is playing a significant role in the \$2.2 million restoration and reinstallation of Portland's historic and iconic Elk statue located at SW Main between Chapman and Lownsdale Squares. The Fountain was built in 1900 and named after its benefactor, David P. Thompson, who served as Portland's mayor from 1879 to 1882. As a founding director of the Oregon Humane Society, Thompson wanted to pay homage to the wildlife that once roamed the city, hence the 3000-pound bronze Elk that proudly stands on top the fountain.

The Elk statue has been a site of political expression since the city's early marches for women's suffrage, and most recently serving as a backdrop for racial inequity protests in 2020. The 2020 riot fires in the fountain base caused permanent damage to several pieces of the fountain. Although the bronze elk statue was not damaged, when examined it was discovered the statue was only secured to the base with one bolt, so it was removed to be cleaned and stored until the base restoration was complete. To restore the stone granite base that the Elk is mounted on, Pioneer worked closely with a quarry in Vermont using the original granite pieces as templates to cut the new slabs needed. The slabs were then shipped to a stone fabricating company in Cleveland, Ohio, and eventually to Pioneer's warehouse.

Pioneer will also assist in retrofitting the willwater-spouting fountain with a recirculating water pump and a new stainless-steel vault to be installed underneath the stone fountain base. The Elk Fountain project is targeted for an early November installation.

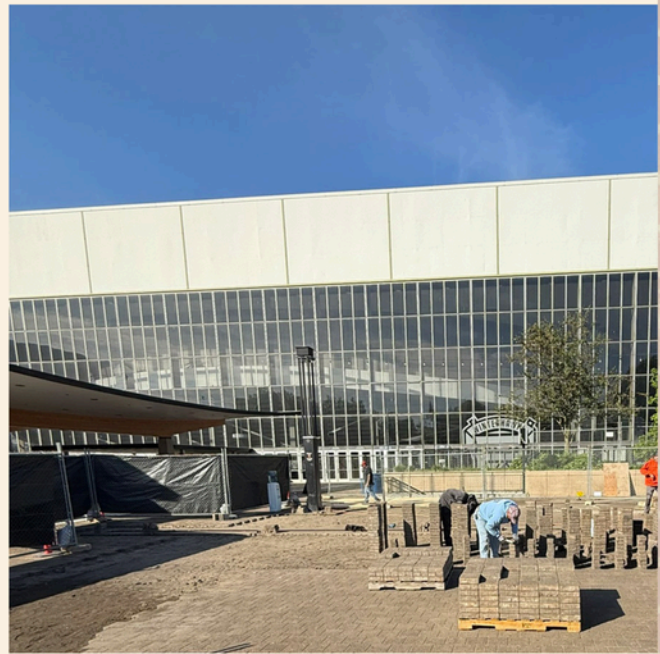


A Grand Re-Entrance

**Veteran's Memorial Coliseum, Phase 3 Renovation
Portland, OR**

Construction Project Manager: Wenaha Group, Federal Way, Washington

The Veterans Memorial Coliseum opened in January 1961 and is an indoor arena located in the oldest part of the Rose Quarter area in Portland, Oregon. The arena is the home of the Portland Winterhawks and was the original home of the Portland Trail Blazers (NBA Champs in 1977!). The Coliseum is on the National Register of Historic Places in recognition of its architectural significance. After many years of grassroots efforts to save the Coliseum, the overall \$40M project started in 2023, with Pioneer's work in the third of four phases to restore the entrance terrace. Project scope included the removal/salvage of existing brick pavers and removing overburden and existing waterproofing. Crews then re-waterproofed, re-applied overburden, and re-applied brick pavers to refresh and restore the expansive entrance terrace.



Otterly Restored: A Scenic Comeback

Otter Crest Scenic Viewpoint

Newport, OR

GC: Bremick Construction

The historic gift shop at the Otter Crest State Scenic Viewpoint was recently restored to reinforce its structural integrity, preserve the building's character and enhance accessibility. The gift shop was built in 1937 and was listed on the National Register of Historic Places in 2014 for its significance to early tourism along the Oregon Coast Highway and its association with the U.S. Coast Guard operations during World War II. Pioneer's services included the historical restoration of the exterior stone chimney, seismic upgrades to strengthen the foundation and walls, and new exterior siding and painting. Visit this historic gift shop and enjoy one of the best views of the Oregon coast!



Seismic Studies in Session

MarysvilleElementary School, PortlandPublicSchools
Portland, OR

GC: InLine Construction

Marysville serves students in grades K-5 and is one of 81 schools within the Portland Public Schools urban school district, founded in Portland, Oregon in 1851. Today PPS serves more than 44,000 students and is one of the largest school districts in the Pacific

Northwest. Pioneer recently finished a Carbon Fiber project at Marysville which provided seismic upgrading by installing fiber reinforced polymer to the interior unreinforced masonry walls in the schools' cafeteria. Our crew coordinated with InLine to create a successful schedule working with several other trades to complete the upgrades within the summer months before students returned. Once completed, a final coat of thickened epoxy saturant was applied. Crews worked 12 hrs. shifts Mon-Sat to meet the late August 2025 deadline.



Dean's List for Durability

Gilkey Hall

Oregon State University

GC: Lease Crutcher Lewis

OSU's circa 1916 Gilkey Hall is undergoing a \$16.5M renovation including accessibility upgrades, seismic strengthening and a roof replacement. Pioneer was called in once work was already underway and quickly mobilized a team to complete the majority of their services this fall. Crews will return next spring to finish up some additional brick and windowsill work once new replacement windows are installed. Our primary service included extensive exterior tuckpointing to remove, repair and refill the mortar that had deteriorated over the past decades. Serving Oregon State University since the early 1990s, Pioneer has provided restoration and maintenance services to several campus structures.



Share this publication with co-workers or industry peers! Please forward this email.



**PIONEER
WATERPROOFING
COMPANY
INC.**

Copyright (C) 2025 Pioneer Waterproofing Company, Inc.. All rights reserved.

Our mailing address is:

Phone: (503) 232-9020

*Want to change how you receive these emails?
You can update your preferences or unsubscribe*